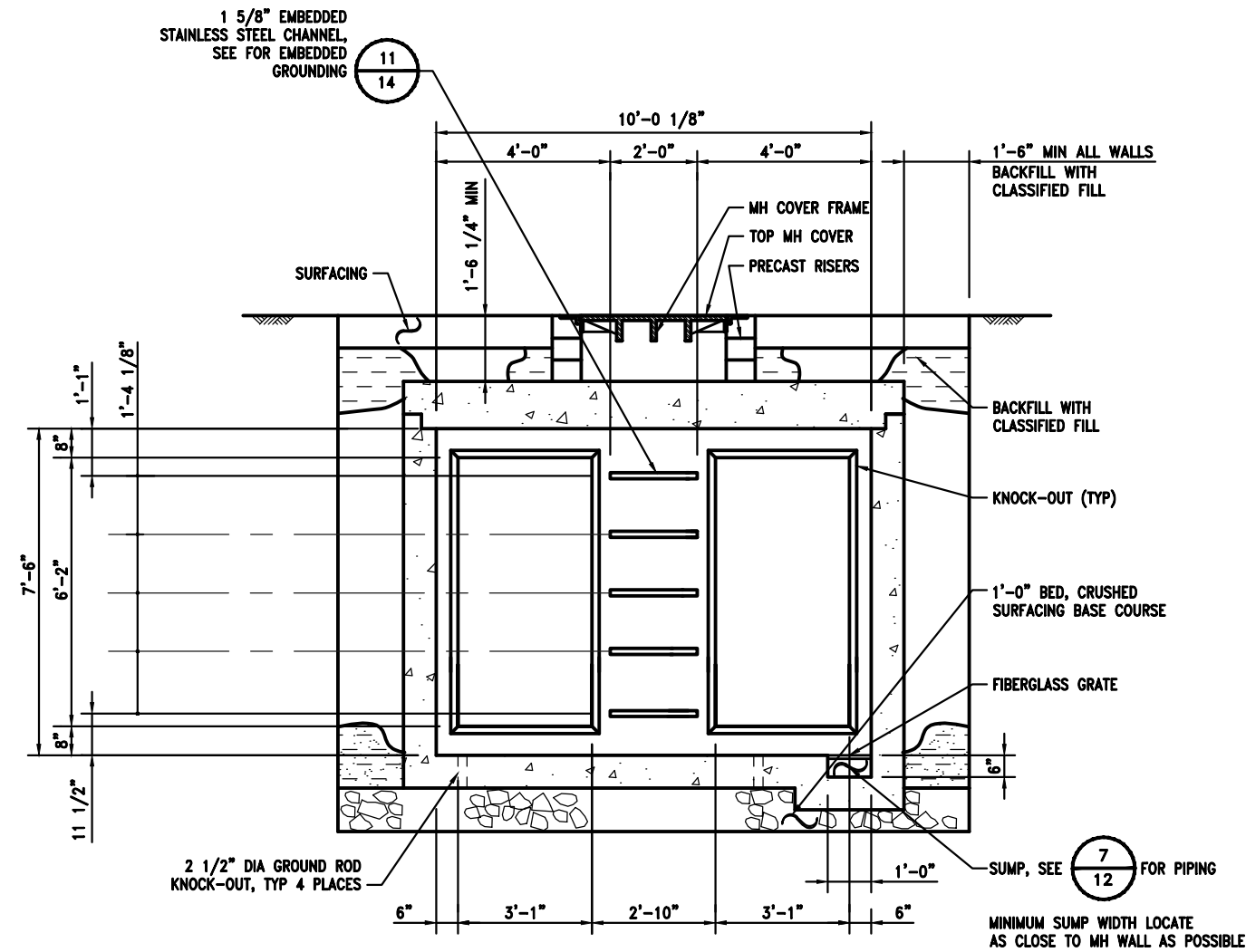


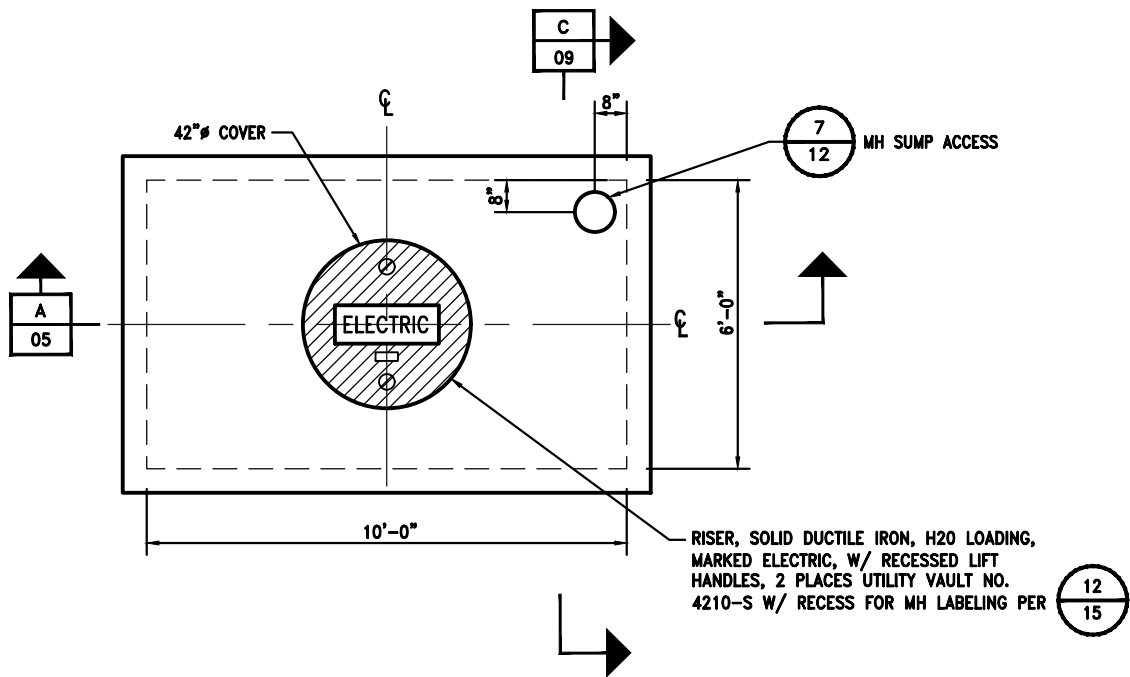
- GENERAL NOTES:**
1. MINIMUM MANHOLE SIZE. NOT RECOMMENDED UNLESS PHYSICAL CONSTRAINTS DICTATE USE.
 2. TERMS-A-DUCTS RECOMMENDED FOR CONDUITS IDENTIFIED AT INSTALLATION OF MH.



SECTION

CABLE PULLING MANHOLE
SCALE: 1/4" = 1'-0"

A	A
05	09



PLAN

CABLE PULLING MANHOLE
SCALE: 1/4"=1'-0"

REVISIONS

NO.	DATE	BY	DESCRIPTION
1	03/01/2019	KDM	2019 F&I STANDARD DETAILS
2	03/01/2020	KDM	2020 F&I STANDARD DETAILS

PROJECT MANAGER:

PROJECT ENGINEER:

DESIGN ENGINEER:

DRAFTER:

SCALE:
AS NOTED

DATE:

CHECKED/APPROVED BY:



SEA-TAC INTERNATIONAL AIRPORT

PROJECT: **F&I STANDARD DETAILS**

SHEET TITLE: **CABLE PULLING MANHOLE
PLAN AND SECTION**

WORK PROJECT NO.

CONSULTANT'S NO.

PORT OF SEATTLE NO.

260543

05